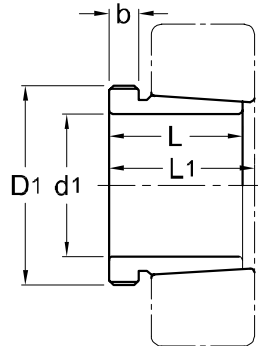




**Withdrawal Sleeves  
AH 2**



TAPER 1 : 12

Withdrawal Part No.	d1 mm	L mm	L1 <sup>1)</sup> mm	b mm	Thread <sup>2)</sup> D1 mm	Appropriate Withdrawal Nut No.	Weight (kgs)
AH 208	35	25	27	6	M 45 x 1.5	AN 09	0.081
AH 209	40	26	29	6	M 50 x 1.5	AN 10	0.095
AH 210	45	28	31	7	M 55 x 2	AN 11	0.114
AH 211	50	29	32	7	M 60 x 2	AN 12	0.132
AH 212	55	32	35	8	M 65 x 2	AN 13	0.161
AH 213	60	32.5	36	8	M 75 x 2	AN 15	0.213
AH 214	65	33.5	37	8	M 80 x 2	AN 16	0.240
AH 215	70	34.5	38	8	M 85 x 2	AN 17	0.259
AH 216	75	35.5	39	8	M 90 x 2	AN 18	0.284
AH 217	80	38.5	42	9	M 95 x 2	AN 19	0.314
AH 218	85	40	44	9	M 100 x 2	AN 20	0.351
AH 219	90	43	47	10	M 105 x 2	AN 21	0.403
AH 220	95	45	49	10	M 110 x 2	AN 22	0.481
AH 222	105	50	54	11	M 120 x 2	AN 24	0.547

NOTE :

1) Dimension L1 decreases as the withdrawal sleeve is driven in during mouting.

L1尺寸隨退卸套鎖緊而變小。

2) M means metric thread.

M代表公制螺紋。