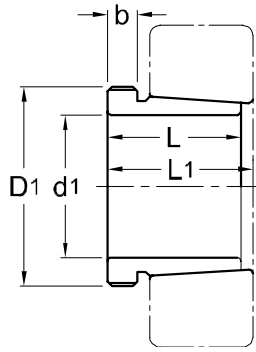




Withdrawal Sleeves
AH 23



TAPER 1 : 12

Withdrawal Part No.	d1 mm	L mm	L1 ¹⁾ mm	b mm	Thread ²⁾ D1 mm	Appropriate Withdrawal Nut No.	Weight (kgs)
AH 2308	35	40	43	7	M 45 x 1.5	AN 09	0.128
AH 2309	40	44	47	7	M 50 x 1.5	AN 10	0.164
AHX 2310	45	50	53	9	M 55 x 2	AN 11	0.209
AHX 2311	50	54	57	10	M 60 x 2	AN 12	0.253
AHX 2312	55	58	61	11	M 65 x 2	AN 13	0.297
AH 2313	60	61	64	12	M 75 x 2	AN 15	0.395
AHX 2314	65	64	68	12	M 80 x 2	AN 16	0.466
AHX 2315	70	68	72	12	M 85 x 2	AN 17	0.534
AHX 2316	75	71	75	12	M 90 x 2	AN 18	0.597
AHX 2317	80	74	78	13	M 95 x 2	AN 19	0.670
AHX 2318	85	79	83	14	M 100 x 2	AN 20	0.779
AHX 2319	90	85	89	16	M 105 x 2	AN 21	0.886
AHX 2320	95	90	94	16	M 110 x 2	AN 22	0.998
AHX 2322	105	98	102	16	M 125 x 2	AN 25	1.350
AHX 2324	115	105	109	17	M 135 x 2	AN 27	1.600
AHX 2326	125	115	119	19	M 145 x 2	AN 29	1.970
AHX 2328	135	125	130	20	M 155 x 3	AN 31	2.330
AHX 2330	145	135	140	24	M 165 x 3	AN 33	2.820
AH 2332	150	140	146	24	M 180 x 3	AN 36	4.720
AH 2334	160	146	152	24	M 190 x 3	AN 38	5.250
AH 2336	170	154	160	26	M 200 x 3	AN 40	5.830
AH 2338	180	160	167	26	Tr 210 x 4	HN 42	6.630
AH 2340	190	170	177	30	Tr 220 x 4	HN 44	7.540
AH 2344	200	181	189	30	Tr 240 x 4	HN 48	13.500
AH 2348	220	189	197	30	Tr 260 x 4	HN 52	15.500
AH 2352	240	205	213	30	Tr 290 x 4	HN 58	19.600
AH 2356	260	212	220	30	Tr 310 x 5	HN 62	21.600

NOTE :

1) Dimension L1 decreases as the withdrawal sleeve is driven in during mouting.

L1尺寸隨退卸套鎖緊而變小。

2) M means metric thread, Tr means 30°, trapezoid thread and the digits are outside diameter of thread and pitch.

M代表公制螺紋，Tr代表30°，梯形螺紋；數字代表螺紋外徑及螺距。