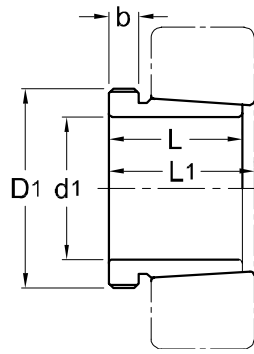




Withdrawal Sleeves
AH 240



TAPER 1 : 30

Withdrawal Part No.	d ₁ mm	L mm	L ₁ ¹⁾ mm	b mm	Thread ²⁾ D ₁ mm	Appropriate Withdrawal Nut No.	Weight (kgs)
AH 24024	115	73	82	13	M 125 x 2	AN 25	0.650
AH 24026	125	83	93	14	M 135 x 2	AN 27	0.840
AH 24028	135	83	93	14	M 145 x 2	AN 29	0.910
AH 24030	145	90	101	15	M 155 x 3	AN 31	1.040
AH 24032	150	95	106	15	M 170 x 3	AN 34	2.330
AH 24034	160	106	117	16	M 180 x 3	AN 36	2.800
AH 24036	170	116	127	16	M 190 x 3	AN 38	3.100
AH 24038	180	118	131	18	M 200 x 3	AN 40	3.500
AH 24040	190	127	140	18	Tr 210 x 4	HN 42	3.930
AH 24044	200	138	152	20	Tr 230 x 4	HN 46	8.250
AH 24048	220	138	153	20	Tr 250 x 4	HN 50	9.000
AH 24052	240	162	178	22	Tr 270 x 4	HN 54	11.800
AH 24056	260	162	179	22	Tr 290 x 4	HN 58	12.800
AH 24060	280	184	202	24	Tr 310 x 5	HN 62	15.500
AH 24064	300	184	202	24	Tr 330 x 5	HN 66	16.600
AH 24068	320	206	225	26	Tr 360 x 5	HNL 72	21.700
AH 24072	340	206	226	26	Tr 380 x 5	HNL 76	22.700
AH 24076	360	208	228	28	Tr 400 x 5	HNL 80	23.700
AH 24080	380	228	248	28	Tr 420 x 5	HNL 84	27.100
AH 24084	400	230	252	30	Tr 440 x 5	HNL 88	29.000
AH 24088	420	242	264	30	Tr 460 x 5	HNL 92	31.900
AH 24092	440	250	273	32	Tr 480 x 5	HNL 96	34.700
AH 24096	460	250	273	32	Tr 500 x 5	HNL 100	36.600
AH 240/500	480	253	276	35	Tr 530 x 6	HNL 106	41.700

NOTE :

1) Dimension L1 decreases as the withdrawal sleeve is driven in during mouting.

L1尺寸隨退卸套鎖緊而變小。

2) M means metric thread, Tr means 30°, trapezoid thread and the digits are outside diameter of thread and pi

M代表公制螺紋，Tr代表30°，梯形螺紋；數字代表螺紋外徑及螺距。