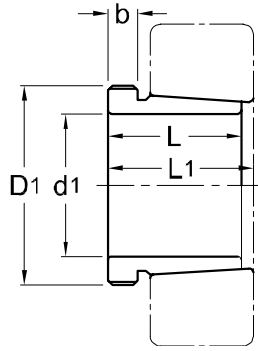




**Withdrawal Sleeves  
AH 3**



TAPER 1 : 12

Withdrawal Part No.	d1 mm	L mm	L1 <sup>1)</sup> mm	b mm	Thread <sup>2)</sup> D1 mm	Appropriate Withdrawal Nut No.	Weight (kgs)
AH 308	35	29	32	6	M 45 x 1.5	AN 09	0.090
AH 309	40	31	34	6	M 50 x 1.5	AN 10	0.109
AHX 310	45	35	38	7	M 55 x 2	AN 11	0.137
AHX 311	50	37	40	7	M 60 x 2	AN 12	0.161
AHX 312	55	40	43	8	M 65 x 2	AN 13	0.189
AH 313	60	42	45	8	M 75 x 2	AN 15	0.253
AH 314	65	43	47	8	M 80 x 2	AN 16	0.280
AH 315	70	45	49	8	M 85 x 2	AN 17	0.313
AH 316	75	48	52	8	M 90 x 2	AN 18	0.365
AHX 317	80	52	56	9	M 95 x 2	AN 19	0.429
AHX 318	85	53	57	9	M 100 x 2	AN 20	0.461
AHX 319	90	57	61	10	M 105 x 2	AN 21	0.532
AHX 320	95	59	63	10	M 110 x 2	AN 22	0.582
AHX 322	105	63	67	12	M 120 x 2	AN 24	0.663

NOTE :

1) Dimension L1 decreases as the withdrawal sleeve is driven in during mouting.

L1尺寸隨退卸套鎖緊而變小。

2) M means metric thread.

M代表公制螺紋。