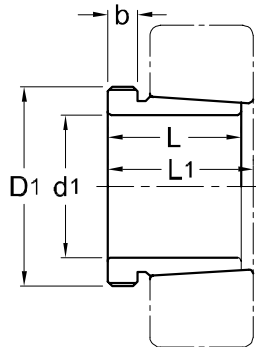




## Withdrawal Sleeves AH 31



TAPER 1 : 12

Withdrawal Part No.	d1 mm	L mm	L1 <sup>1)</sup> mm	b mm	Thread <sup>2)</sup> D1 mm	Appropriate Withdrawal Nut No.	Weight (kgs)
AHX 3120	95	64	68	11	M 110 x 2	AN 22	0.650
AHX 3122	105	68	72	11	M 120 x 2	AN 24	0.760
AHX 3124	115	75	79	12	M 130 x 2	AN 26	0.950
AHX 3126	125	78	82	12	M 140 x 2	AN 28	1.080
AHX 3128	135	83	88	14	M 150 x 2	AN 30	1.280
AHX 3130	145	96	101	15	M 165 x 3	AN 33	1.790
AH 3132	150	103	108	16	M 180 x 3	AN 36	3.210
AH 3134	160	104	109	16	M 190 x 3	AN 38	3.400
AH 3136	170	116	122	19	M 200 x 3	AN 40	4.220
AH 3138	180	125	131	20	Tr 210 x 4	HN 42	4.890
AH 3140	190	134	140	21	Tr 220 x 4	HN 44	5.490
AH 3144	200	145	151	23	Tr 240 x 4	HN 48	10.400
AH 3148	220	154	161	25	Tr 260 x 4	HN 52	12.000
AH 3152	240	172	179	26	Tr 290 x 4	HN 58	16.200
AH 3156	260	175	183	28	Tr 310 x 5	HN 62	17.500
AH 3160	280	192	200	30	Tr 330 x 5	HN 66	20.800
AH 3164	300	209	217	31	Tr 350 x 5	HN 70	24.500
AH 3168	320	225	234	33	Tr 370 x 5	HN 74	29.000
AH 3172	340	229	238	35	Tr 400 x 5	HN 80	33.000
AH 3176	360	232	242	36	Tr 420 x 5	HN 84	35.700
AH 3180	380	240	250	38	Tr 440 x 5	HN 88	39.500
AH 3184	400	266	276	40	Tr 460 x 5	HN 92	46.500
AHX 3188	420	270	281	42	Tr 480 x 5	HN 96	49.800
AHX 3192	440	285	296	43	Tr 510 x 6	HN 102	57.900
AHX 3196	460	295	307	45	Tr 530 x 6	HN 106	63.100
AHX 31/500	480	313	325	47	Tr 550 x 6	HN 110	70.900

NOTE :

1) Dimension L1 decreases as the withdrawal sleeve is driven in during mouting.

L1尺寸隨退卸套鎖緊而變小。

2) M means metric thread, Tr means 30°, trapezoid thread and the digits are outside diameter of thread and pitch.

M代表公制螺紋，Tr代表30°，梯形螺紋；數字代表螺紋外徑及螺距。