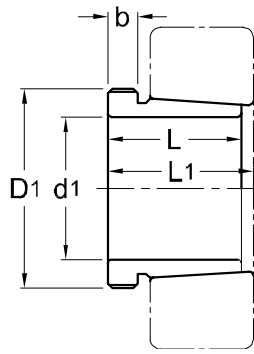




Withdrawal Sleeves
AH 39



TAPER 1 : 12

Withdrawal Part No.	d ₁ mm	L mm	L ₁ ¹⁾ mm	b mm	Thread ²⁾ D ₁ mm	Appropriate Withdrawal Nut No.	Weight (kgs)
AH 3936	170	66	71	13	M 190 x 3	AN 38	1.910
AH 3638	180	66	71	13	M 200 x 3	AN 40	2.020
AH 3940	190	77	83	16	Tr 210 x 4	HN 42	2.620
AH 3944	200	77	83	16	Tr 230 x 4	HN 46	4.830
AH 3948	220	77	83	16	Tr 250 x 4	HN 50	5.290
AH 3952	240	94	100	18	Tr 270 x 4	HN 54	7.060
AH 3956	260	94	100	18	Tr 290 x 4	HN 58	7.700
AH 3960	280	112	119	21	Tr 310 x 5	HN 62	10.100
AH 3964	300	112	119	21	Tr 330 x 5	HN 66	10.800
AH 3968	320	112	119	21	Tr 360 x 5	HNL 72	12.400
AH 3972	340	112	119	21	Tr 380 x 5	HNL 76	13.100
AH 3976	360	130	138	22	Tr 400 x 5	HNL 80	15.900
AH 3980	380	130	138	22	Tr 420 x 5	HNL 84	17.200
AH 3984	400	130	138	22	Tr 440 x 5	HNL 88	18.100
AH 3988	420	145	153	25	Tr 460 x 5	HNL 92	21.500
AH 3992	440	145	153	25	Tr 480 x 5	HNL 96	22.500
AH 3996	460	158	167	28	Tr 500 x 5	HNL 100	26.000
AH 39/500	480	162	172	32	Tr 530 x 6	HNL 106	30.100

NOTE :

1) Dimension L1 decreases as the withdrawal sleeve is driven in during mouting.

L1尺寸隨退卸套鎖緊而變小。

2) M means metric thread, Tr means 30°, trapezoid thread and the digits are outside diameter of thread and p

M代表公制螺紋，Tr代表30°，梯形螺紋；數字代表螺紋外徑及螺距。