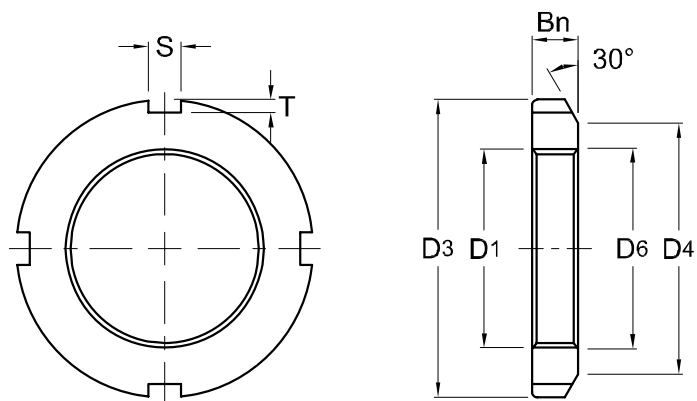




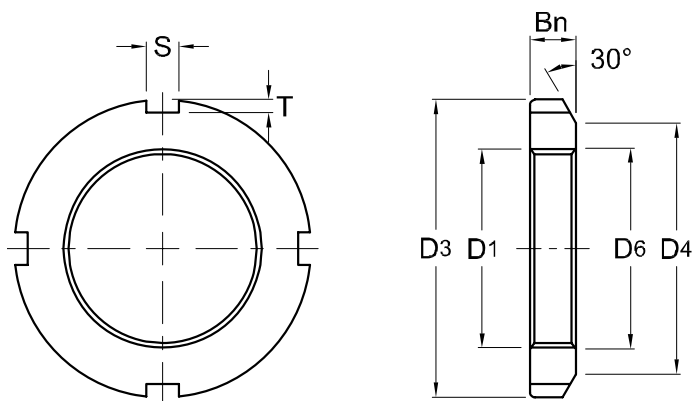
Locknuts
AN
KM



Lock Nut Part No.	D ₁ Thread	D ₃ mm	D ₄ mm	B _n mm	S mm	T mm	D ₆ mm	Lock Washer	Weight (kgs)
AN 00	M 10 x 0.75	18	13.5	4	3	2	10.5	AW 00	0.005
AN 01	M 12 x 1.0	22	17	4	3	2	12.5	AW 01	0.007
AN 02	M 15 x 1.0	25	21	5	4	2	15.5	AW 02	0.010
AN 03	M 17 x 1.0	28	24	5	4	2	17.5	AW 03	0.013
AN 04	M 20 x 1.0	32	26	6	4	2	20.5	AW 04	0.019
AN 05	M 25 x 1.5	38	32	7	5	2	25.8	AW 05	0.025
AN 06	M 30 x 1.5	45	38	7	5	2	30.8	AW 06	0.043
AN 07	M 35 x 1.5	52	44	8	5	2	35.8	AW 07	0.053
AN 08	M 40 x 1.5	58	50	9	6	2.5	40.8	AW 08	0.085
AN 09	M 45 x 1.5	65	56	10	6	2.5	45.8	AW 09	0.119
AN 10	M 50 x 1.5	70	61	11	6	2.5	50.8	AW 10	0.148
AN 11	M 55 x 2.0	75	67	11	7	3	56	AW 11	0.158
AN 12	M 60 x 2.0	80	73	11	7	3	61	AW 12	0.174
AN 13	M 65 x 2.0	85	79	12	7	3	66	AW 13	0.203
AN 14	M 70 x 2.0	92	85	12	8	3.5	71	AW 14	0.242
AN 15	M 75 x 2.0	98	90	13	8	3.5	76	AW 15	0.287
AN 16	M 80 x 2.0	105	95	15	8	3.5	81	AW 16	0.397
AN 17	M 85 x 2.0	110	102	16	8	3.5	86	AW 17	0.451
AN 18	M 90 x 2.0	120	108	16	10	4	91	AW 18	0.556
AN 19	M 95 x 2.0	125	113	17	10	4	96	AW 19	0.658
AN 20	M 100 x 2.0	130	120	18	10	4	101	AW 20	0.698
AN 21	M 105 x 2.0	140	126	18	12	5	106	AW 21	0.845
AN 22	M 110 x 2.0	145	133	19	12	5	111	AW 22	0.965
AN 23	M 115 x 2.0	150	137	19	12	5	116	AW 23	1.010
AN 24	M 120 x 2.0	155	138	20	12	5	126	AW 24	1.080
AN 25	M 125 x 2.0	160	148	21	12	5	126	AW 25	1.190
AN 26	M 130 x 2.0	165	149	21	12	5	131	AW 26	1.250
AN 27	M 135 x 2.0	175	160	22	14	6	136	AW 27	1.550
AN 28	M 140 x 2.0	180	160	22	14	6	141	AW 28	1.560



Locknuts
AN
KM



Lock Nut Part No.	D ₁ Thread	D ₃ mm	D ₄ mm	B _n mm	S mm	T mm	D ₆ mm	Lock Washer	Weight (kgs)
AN 29	M 145 x 2.0	190	171	24	14	6	146	AW 29	2.000
AN 30	M 150 x 2.0	195	171	24	14	6	151	AW 30	2.030
AN 31	M 155 x 3.0	200	182	25	16	7	156.5	AW 31	2.210
AN 32	M 160 x 3.0	210	182	25	16	7	161.5	AW 32	2.590
AN 33	M 165 x 3.0	210	193	26	16	7	166.5	AW 33	2.430
AN 34	M 170 x 3.0	220	193	26	16	7	171.5	AW 34	2.800
AN 36	M 180 x 3.0	230	203	27	18	8	181.5	AW 36	3.070
AN 38	M 190 x 3.0	240	214	28	18	8	191.5	AW 38	3.390
AN 40	M 200 x 3.0	250	226	29	18	8	201.5	AW 40	3.690

NOTE :

1) M means metric thread and the digits are major diameter of thread and pitch.

M代表公制螺紋；數字代表螺紋外徑及螺距。

2) The specifications of AN can be applied for KM.

AN的尺寸規格適用於KM。