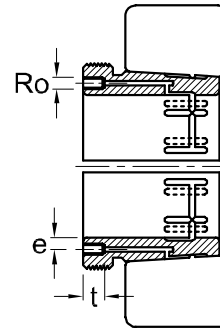
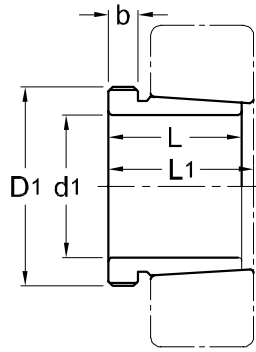




Hydraulic Withdrawal Sleeves
AOH 22



TAPER 1 : 12

Hydraulic Withdrawal Part No.	d ₁ mm	L mm	L ₁ ¹⁾ mm	b mm	Ro	e mm	t mm	Thread ²⁾ D ₁ mm	Appropriate Withdrawal Nut No.	Weight (kgs)
AOH 2236	170	105	110	17	M6	4.5	10	M 200 x 3	AN 40	3.730
AOH 2238	180	112	117	18	M6	4.5	10	Tr 210 x 4	HN 42	4.250
AOH 2240	190	118	123	19	M6	4.5	10	Tr 220 x 4	HN 44	4.680
AOH 2244	200	130	136	20	G 1/8	8.5	14	Tr 240 x 4	HN 48	9.100
AOH 2248	220	144	150	21	G 1/8	8.5	14	Tr 260 x 4	HN 52	11.100
AOH 2252	240	155	161	23	G 1/8	8.5	14	Tr 290 x 4	HN 58	14.000
AOH 2256	260	155	163	24	G 1/8	8.5	14	Tr 310 x 5	HN 62	15.200
AOH 2260	280	170	178	26	G 1/8	8.5	14	Tr 330 x 5	HN 66	18.100
AOH 2264	300	180	190	27	G 1/8	8.5	14	Tr 350 x 5	HN 70	20.200

NOTE :

1) Dimension L₁ decreases as the withdrawal sleeve is driven in during mouting.

L₁尺寸隨油壓退卸套鎖緊而變小。

2) M means metric thread, Tr means 30°, trapezoid thread and the digits are outside diameter of thread and pitch.

M代表公制螺紋，Tr代表30°，梯形螺紋；數字代表螺紋外徑及螺距。