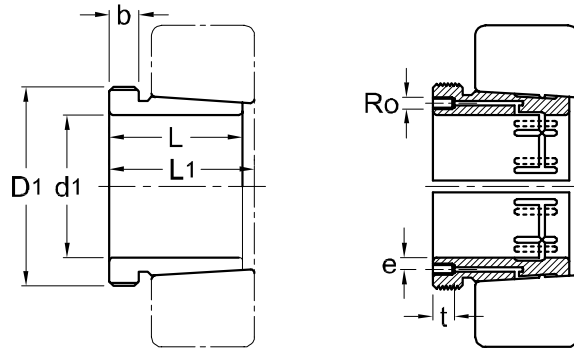




Hydraulic Withdrawal Sleeves AOH 23



TAPER 1 : 12

Hydraulic Withdrawal Part No.	d ₁ mm	L mm	L ₁ ¹⁾ mm	b mm	Ro	e mm	t mm	Thread ²⁾ D ₁ mm	Appropriate Withdrawal Nut No.	Weight (kgs)
AOH 2332	150	140	146	24	M6	4.5	10	M 180 x 3	AN 36	4.720
AOH 2334	160	146	152	24	M6	4.5	10	M 190 x 3	AN 38	5.250
AOH 2336	170	154	160	26	M6	4.5	10	M 200 x 3	AN 40	5.830
AOH 2338	180	160	167	26	M6	4.5	10	Tr 210 x 4	HN 42	6.630
AOH 2340	190	170	177	30	M6	4.5	10	Tr 220 x 4	HN 44	7.540
AOH 2344	200	181	189	30	G 1/8	8.5	14	Tr 240 x 4	HN 48	13.500
AOH 2348	220	189	197	30	G 1/8	8.8	14	Tr 260 x 4	HN 52	15.500
AOH 2352	240	205	213	30	G 1/8	8.5	14	Tr 290 x 4	HN 58	19.600
AOH 2356	260	212	220	30	G 1/8	8.5	14	Tr 310 x 5	HN 62	21.600

NOTE :

1) Dimension L1 decreases as the withdrawal sleeve is driven in during mouting.

L1尺寸隨油壓退卸套鎖緊而變小。

2) M means metric thread, Tr means 30°, trapezoid thread and the digits are outside diameter of thread and pitch.

M代表公制螺紋，Tr代表30°，梯形螺紋；數字代表螺紋外徑及螺距。