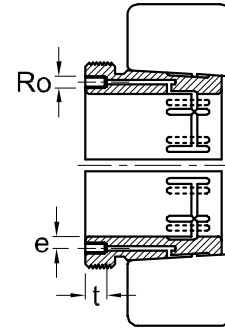
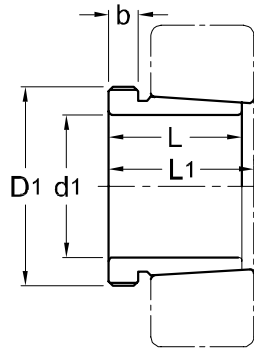




**Hydraulic Withdrawal Sleeves
AOH 240**



TAPER 1 : 30

Hydraulic Withdrawal Part No.	d ₁ mm	L mm	L ₁ ¹⁾ mm	b mm	Ro	e mm	t mm	Thread ²⁾ D ₁ mm	Appropriate Withdrawal Nut No.	Weight (kgs)
AOH 24044	200	138	152	20	M6	8	10	Tr 230 x 4	HN 46	8.250
AOH 24048	220	138	153	20	M6	8	10	Tr 250 x 4	HN 50	9.000
AOH 24052	240	162	178	22	M6	8	10	Tr 270 x 4	HN 54	11.800
AOH 24056	260	162	179	22	M6	8	10	Tr 290 x 4	HN 58	12.800
AOH 24060	280	184	202	24	M6	8	10	Tr 310 x 5	HN 62	15.500
AOH 24064	300	184	202	24	M6	8	10	Tr 330 x 5	HN 66	16.600
AOH 24068	320	206	225	26	G 1/8	8.5	14	Tr 360 x 5	HNL 72	21.700
AOH 24072	340	206	226	26	G 1/8	8.5	14	Tr 380 x 5	HNL 76	22.700
AOH 24076	360	208	228	28	G 1/8	8.5	14	Tr 400 x 5	HNL 80	23.700
AOH 24080	380	228	248	28	G 1/8	8.5	14	Tr 420 x 5	HNL 84	27.100
AOH 24084	400	230	252	30	G 1/8	8.5	14	Tr 440 x 5	HNL 88	29.000
AOH 24088	420	242	264	30	G 1/8	8.5	14	Tr 460 x 5	HNL 92	31.900
AOH 24092	440	250	273	32	G 1/8	8.5	14	Tr 480 x 5	HNL 96	34.700
AOH 24096	460	250	273	32	G 1/8	8.5	14	Tr 500 x 5	HNL 100	36.600
AOH 240/500	480	253	276	35	G 1/8	8.5	14	Tr 530 x 6	HNL 106	43.900

NOTE :

1) Dimension L1 decreases as the withdrawal sleeve is driven in during mouting.

L1尺寸隨油壓退卸套鎖緊而變小。

2) M means metric thread, Tr means 30°, trapezoid thread and the digits are outside diameter of thread and pitch.

M代表公制螺紋，Tr代表30°，梯形螺紋；數字代表螺紋外徑及螺距。