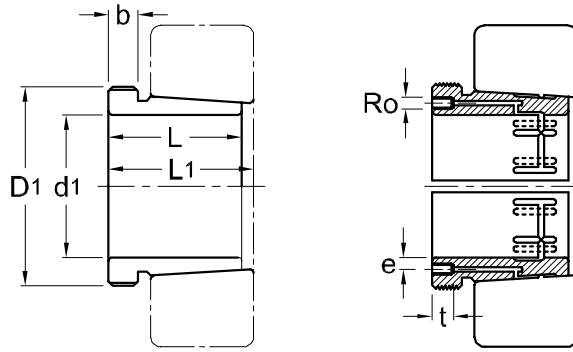




Hydraulic Withdrawal Sleeves AOH 241



TAPER 1 : 30

Hydraulic Withdrawal Part No.	d ₁ mm	L mm	L1 ¹⁾ mm	b mm	Ro	e mm	t mm	Thread ²⁾ D ₁ mm	Appropriate Withdrawal Nut No.	Weight (kgs)
AOH 24144	200	170	184	20	M6	7	10	Tr 230 x 4	HN 46	10.200
AOH 24148	220	180	195	20	G 1/8	8.5	14	Tr 260 x 4	HN 52	12.500
AOH 24152	240	202	218	22	G 1/8	8.5	14	Tr 280 x 4	HN 56	15.400
AOH 24156	260	202	219	22	G 1/8	8.5	14	Tr 300 x 4	HN 60	16.300
AOH 24160	280	224	242	24	G 1/8	8.5	14	Tr 320 x 5	HN 64	19.500
AOH 24164	300	242	260	24	G 1/8	8.5	14	Tr 340 x 5	HN 68	21.400
AOH 24164	320	269	288	26	G 1/8	8.5	14	Tr 360 x 5	HN 72	27.100
AOH 24168	340	269	289	26	G 1/8	8.5	14	Tr 380 x 5	HN 76	29.600
AOH 24172	360	271	291	28	G 1/8	8.5	14	Tr 400 x 5	HN 80	31.300
AOH 24172	380	278	298	28	G 1/8	8.5	14	Tr 420 x 5	HN 84	34.400
AOH 24176	400	310	332	30	G 1/8	8.5	14	Tr 440 x 5	HN 88	40.300
AOH 24180	420	310	332	30	G 1/8	8.5	14	Tr 460 x 5	HN 92	42.300
AOH 24180	440	332	355	32	G 1/8	8.5	14	Tr 480 x 5	HN 96	47.600
AOH 24184	460	340	363	32	G 1/8	8.5	14	Tr 500 x 5	HN 100	52.700
AOH 241/500	480	360	383	35	G 1/8	8.5	14	Tr 530 x 6	HN 106	59.100

NOTE :

1) Dimension L1 decreases as the withdrawal sleeve is driven in during mouting.

L1尺寸隨油壓退卸套鎖緊而變小。

2) M means metric thread, Tr means 30°, trapezoid thread and the digits are outside diameter of thread and pitch.

M代表公制螺紋，Tr代表30°，梯形螺紋；數字代表螺紋外徑及螺距。