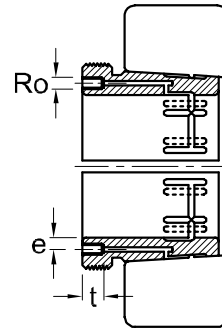
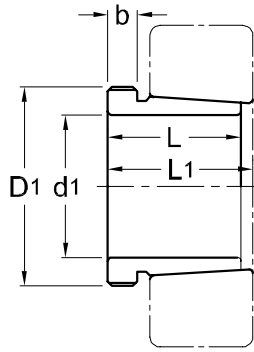




Hydraulic Withdrawal Sleeves AOH 30



TAPER 1 : 12

Hydraulic Withdrawal Part No.	d ₁ mm	L mm	L ₁ ¹⁾ mm	b mm	Ro	e mm	t mm	Thread ²⁾ D ₁ mm	Appropriate Withdrawal Nut No.	Weight (kgs)
AOH 3032	150	77	82	16	M6	4.2	10	M 170 x 3	AN 34	2.060
AOH 3034	160	85	90	17	M6	4.2	10	M 180 x 3	AN 36	2.430
AOH 3036	170	92	98	17	M6	4.2	10	M 190 x 3	AN 38	2.810
AOH 3038	180	96	102	18	M6	4.2	10	Tr 205 x 4	HNL 41	3.320
AOH 3040	190	102	108	19	M6	4.2	10	Tr 215 x 4	HNL 43	3.800
AOH 3044	200	111	117	20	G 1/8	8.5	14	Tr 235 x 4	HNL 47	7.400
AOH 3048	220	116	123	21	G 1/8	8.5	14	Tr 260 x 4	HNL 52	8.750
AOH 3052	240	128	135	23	G 1/8	8.5	14	Tr 280 x 4	HNL 56	10.700
AOH 3056	260	131	139	24	G 1/8	8.5	14	Tr 300 x 4	HNL 60	12.000
AOH 3060	280	145	153	26	G 1/8	8.5	14	Tr 320 x 5	HNL 64	14.400
AOH 3064	300	149	157	27	G 1/8	8.5	14	Tr 345 x 5	HNL 69	16.000
AOH 3068	320	162	171	28	G 1/8	8.5	14	Tr 365 x 5	HNL 73	19.500
AOH 3072	340	167	176	30	G 1/8	8.5	14	Tr 385 x 5	HNL 77	21.000
AOH 3076	360	170	180	31	G 1/8	8.5	14	Tr 410 x 5	HNL 82	23.200
AOH 3080	380	183	193	33	G 1/8	8.5	14	Tr 430 x 5	HNL 86	27.300
AOH 3084	400	186	196	34	G 1/8	8.5	14	Tr 450 x 5	HNL 90	29.000
AOH 3088	420	194	205	35	G 1/8	8.5	14	Tr 470 x 5	HNL 94	32.000
AOH 3092	440	202	213	37	G 1/8	8.5	14	Tr 490 x 5	HNL 98	35.200
AOH 3096	460	205	217	38	G 1/8	8.5	14	Tr 520 x 6	HNL 104	39.200
AOH 30/500	480	209	221	40	G 1/8	8.5	14	Tr 540 x 6	HNL 108	42.500

NOTE :

1) Dimension L1 decreases as the withdrawal sleeve is driven in during mouting.

L1尺寸隨油壓退卸套鎖緊而變小。

2) M means metric thread, Tr means 30°, trapezoid thread and the digits are outside diameter of thread and pitch.

M代表公制螺紋，Tr代表30°，梯形螺紋；數字代表螺紋外徑及螺距。