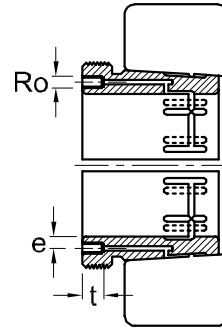
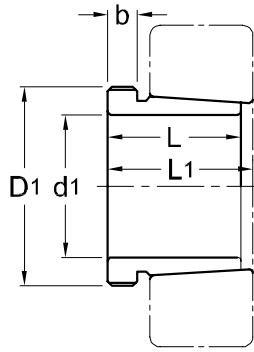




Hydraulic Withdrawal Sleeves AOH 32



TAPER 1 : 12

Hydraulic Withdrawal Part No.	d ₁ mm	L mm	L ₁ ¹⁾ mm	b mm	Ro	e mm	t mm	Thread ²⁾ D ₁ mm	Appropriate Withdrawal Nut No.	Weight (kgs)
AOH 3232	150	124	130	20	M6	4.5	10	M 180 x 3	AN 36	4.080
AOH 3234	160	134	140	24	M6	4.5	10	M 190 x 3	AN 38	4.800
AOH 3236	170	140	146	24	M6	4.5	10	M 200 x 3	AN 40	5.320
AOH 3238	180	145	152	25	M6	4.5	10	Tr 210 x 4	HN 42	5.900
AOH 3240	190	153	160	25	M6	4.5	10	Tr 220 x 4	HN 44	6.680
AOH 3260	280	228	236	34	G 1/8	8.5	14	Tr 330 x 5	HN 66	26.000
AOH 3264	300	246	254	36	G 1/8	8.5	14	Tr 350 x 5	HN 70	30.600
AOH 3268	320	264	273	38	G 1/8	8.5	14	Tr 370 x 5	HN 74	35.800
AOH 3272	340	274	283	40	G 1/8	8.5	14	Tr 400 x 5	HN 80	41.600
AOH 3276	360	284	294	42	G 1/8	8.5	14	Tr 420 x 5	HN 84	46.300
AOH 3280	380	302	312	44	G 1/8	8.5	14	Tr 440 x 5	HN 88	52.500
AOH 3284	400	321	331	46	G 1/8	8.5	14	Tr 460 x 5	HN 92	59.700
AOH 3288	420	330	341	48	G 1/8	8.5	14	Tr 480 x 5	HN 96	64.800
AOH 3292	440	349	360	50	G 1/8	8.5	14	Tr 510 x 6	HN 102	75.200
AOH 3296	460	364	376	52	G 1/8	8.5	14	Tr 530 x 6	HN 106	83.100
AOH 32/500	480	393	405	54	G 1/8	8.5	14	Tr 550 x 6	HN 110	94.700

NOTE :

1) Dimension L1 decreases as the withdrawal sleeve is driven in during mouting.

L1尺寸隨油壓退卸套鎖緊而變小。

2) M means metric thread, Tr means 30°, trapezoid thread and the digits are outside diameter of thread and pitch.

M代表公制螺紋，Tr代表30°，梯形螺紋；數字代表螺紋外徑及螺距。