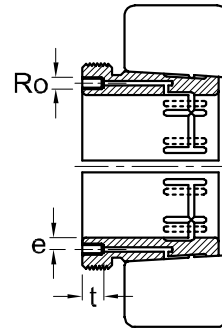
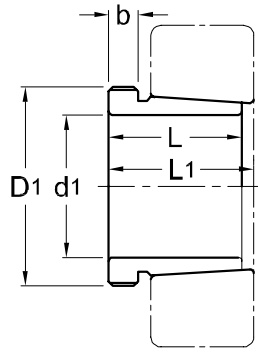




**Hydraulic Withdrawal Sleeves  
AOH 39**



TAPER 1 : 12

Hydraulic Withdrawal Part No.	d <sub>1</sub> mm	L mm	L <sub>1</sub> <sup>1)</sup> mm	b mm	Ro	e mm	t mm	Thread <sup>2)</sup> D <sub>1</sub> mm	Appropriate Withdrawal Nut No.	Weight (kgs)
AOH 3944	200	77	83	16	M8	7.5	12	Tr 230 x 4	HN 46	4.830
AOH 3948	220	77	83	16	M8	7.5	12	Tr 250 x 4	HN 50	5.290
AOH 3952	240	94	100	18	M8	7.5	12	Tr 270 x 4	HN 54	7.060
AOH 3956	260	94	100	18	M8	7.5	12	Tr 290 x 4	HN 58	7.070
AOH 3960	280	112	119	21	M8	7.5	12	Tr 310 x 5	HN 62	10.100
AOH 3964	300	112	119	21	M8	7.5	12	Tr 330 x 5	HN 66	10.800
AOH 3968	320	112	119	21	M8	7.5	12	Tr 360 x 5	HNL 72	12.400
AOH 3972	340	112	119	21	M8	7.5	12	Tr 380 x 5	HNL 76	13.100
AOH 3976	360	130	138	22	M8	7.5	12	Tr 400 x 5	HNL 80	15.900
AOH 3980	380	130	138	22	M8	7.5	12	Tr 420 x 5	HNL 84	17.200
AOH 3984	400	130	138	22	M8	7.5	12	Tr 440 x 5	HNL 88	18.100
AOH 3988	420	145	153	25	G 1/8	8.5	14	Tr 460 x 5	HNL 92	21.500
AOH 3992	440	145	153	25	G 1/8	8.5	14	Tr 480 x 5	HNL 96	22.500
AOH 3996	460	158	167	28	G 1/8	8.5	14	Tr 500 x 5	HNL 100	26.000
AOH 39/500	480	162	172	32	G 1/8	8.5	14	Tr 530 x 6	HNL 106	30.100

NOTE :

1) Dimension L1 decreases as the withdrawal sleeve is driven in during mouting.

L1尺寸隨油壓退卸套鎖緊而變小。

2) M means metric thread, Tr means 30°, trapezoid thread and the digits are outside diameter of thread and pitch.

M代表公制螺紋，Tr代表30°，梯形螺紋；數字代表螺紋外徑及螺距。