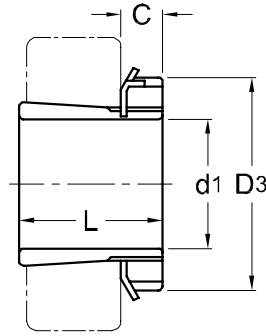




Adapter Sleeves

H 2
HE 2
HS 2
HA 2



TAPER 1 : 12

Adapter ¹⁾		d ₁				L	D ₃	C	Lock Nut	Lock Washer	Weight (kgs)
Part No.	H mm	HE ²⁾ in	HS ³⁾ in	HA ⁴⁾ in	mm	mm	mm				
H 204	17	—	—	—	24	32	7	AN 04	AW 04	0.041	
H 205	20	3/4	7/8	—	26	38	8	AN 05	AW 05	0.070	
H 206	25	1	7/8	15/16	27	45	8	AN 06	AW 06	0.099	
H 207	30	—	1 1/8	1 3/16	29	52	9	AN 07	AW 07	0.125	
H 208	35	1 1/4	1 3/8	1 5/16	31	58	10	AN 08	AW 08	0.174	
H 209	40	1 1/2	1 5/8	1 7/16	33	65	11	AN 09	AW 09	0.227	
H 210	45	1 3/4	1 5/8	1 11/16	35	70	12	AN 10	AW 10	0.274	
H 211	50	2	1 7/8	1 15/16	37	75	12	AN 11	AW 11	0.308	
H 212	55	—	2 1/8	—	38	80	13	AN 12	AW 12	0.346	
H 213	60	2 1/4	2 3/8	2 3/16	40	85	14	AN 13	AW 13	0.401	
H 214	60	—	—	—	41	92	14	AN 14	AW 14	0.593	
H 215	65	2 1/2	—	2 7/16	43	98	15	AN 15	AW 15	0.707	
H 216	70	2 3/4	—	2 11/16	46	105	17	AN 16	AW 16	0.882	
H 217	75	3	—	2 15/16	50	110	18	AN 17	AW 17	1.020	
H 218	80	—	—	3 3/16	52	120	18	AN 18	AW 18	1.190	
H 219	85	3 1/4	—	—	55	125	19	AN 19	AW 19	1.370	
H 220	90	3 1/2	—	3 7/16	58	130	20	AN 20	AW 20	1.490	
H 221	95	—	—	—	60	140	20	AN 21	AW 21	1.720	
H 222	100	4	—	3 15/16	63	145	21	AN 22	AW 22	1.930	

NOTE :

1) Adapter sleeves are supplied complete with lock nuts and lock washers or lock plates.

整組緊定套附螺母及華司或鎖定片。

2) Adapter sleeves for these bores are designated as HE, e.g. HE205.

此欄套筒內徑規格為HE，例如HE205。

3) Adapter sleeves for these bores are designated as HS, e.g. HS205.

此欄套筒內徑規格為HS，例如HS205。

4) Adapter sleeves for these bores are designated as HA, e.g. HA206.

此欄套筒內徑規格為HA，例如HA206。