



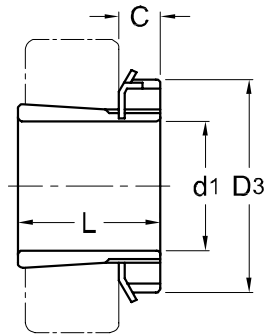
Adapter Sleeves

H 23

HE 23

HS 23

HA 23



TAPER 1 : 12

| Adapter ¹⁾ Part No. | H | d ₁ | | | L | D ₃ | C | C1 ⁵⁾ | Lock Nut | Lock Washer | Weight (kgs) |
|-----------------------------------|-----|------------------------|------------------------|------------------------|-----|----------------|----|------------------|----------|-------------|--------------|
| | mm | HE ²⁾ in | HS ³⁾ in | HA ⁴⁾ in | mm | mm | mm | mm | | | |
| H 2304 | 17 | — | — | — | 31 | 32 | 7 | — | AN 04 | AW 04 | 0.049 |
| H 2305 | 20 | 3/4 | 7/8 | — | 35 | 38 | 8 | — | AN 05 | AW 05 | 0.087 |
| H 2306 | 25 | 1 | 7/8 | 15/16 | 38 | 45 | 8 | — | AN 06 | AW 06 | 0.126 |
| H 2307 | 30 | — | 1 1/8 | 1 3/16 | 43 | 52 | 9 | — | AN 07 | AW 07 | 0.165 |
| H 2308 | 35 | 1 1/4 | 1 3/8 | 1 5/16 | 46 | 58 | 10 | — | AN 08 | AW 08 | 0.224 |
| H 2309 | 40 | 1 1/2 | 1 5/8 | 1 7/16 | 50 | 65 | 11 | — | AN 09 | AW 09 | 0.280 |
| H 2310 | 45 | 1 3/4 | 1 5/8 | 1 11/16 | 55 | 70 | 12 | — | AN 10 | AW 10 | 0.362 |
| H 2311 | 50 | 2 | 1 7/8 | 1 15/16 | 59 | 75 | 12 | — | AN 11 | AW 11 | 0.420 |
| H 2312 | 55 | — | 2 1/8 | — | 62 | 80 | 13 | — | AN 12 | AW 12 | 0.481 |
| H 2313 | 60 | 2 1/4 | 2 3/8 | 2 3/16 | 65 | 85 | 14 | — | AN 13 | AW 13 | 0.557 |
| H 2314 | 60 | — | — | — | 68 | 92 | 14 | — | AN 14 | AW 14 | 0.897 |
| H 2315 | 65 | 2 1/2 | — | 2 7/16 | 73 | 98 | 15 | — | AN 15 | AW 15 | 1.050 |
| H 2316 | 70 | 2 3/4 | — | 2 11/16 | 78 | 105 | 17 | — | AN 16 | AW 16 | 1.280 |
| H 2317 | 75 | 3 | — | 2 15/16 | 82 | 110 | 18 | — | AN 17 | AW 17 | 1.450 |
| H 2318 | 80 | — | — | 3 3/16 | 86 | 120 | 18 | — | AN 18 | AW 18 | 1.690 |
| H 2319 | 85 | 3 1/4 | — | — | 90 | 125 | 19 | — | AN 19 | AW 19 | 1.920 |
| H 2320 | 90 | 3 1/2 | — | 3 7/16 | 97 | 130 | 20 | — | AN 20 | AW 20 | 2.150 |
| H 2321 | 95 | — | — | — | 101 | 140 | 20 | — | AN 21 | AW 21 | 2.460 |
| H 2322 | 100 | 4 | — | 3 15/16 | 105 | 145 | 21 | — | AN 22 | AW 22 | 2.740 |
| H 2324 | 110 | 4 1/4 | — | 4 3/16 | 112 | 155 | 22 | — | AN 24 | AW 24 | 3.190 |
| H 2326 | 115 | 4 1/2 | — | 4 7/16 | 121 | 165 | 23 | — | AN 26 | AW 26 | 4.600 |

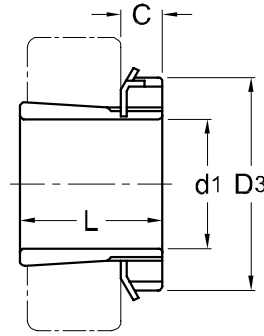


Adapter Sleeves

H 23

HE 23

HA 23



TAPER 1 : 12

| Adapter ¹⁾ | H | HE ²⁾ | d ₁ | HA ⁴⁾ | L | D ₃ | C | C1 ⁵⁾ | Lock Nut | Lock Washer | Weight (kgs) |
|-----------------------|-----|------------------|------------------------|------------------|-----|----------------|----|------------------|----------|-------------|--------------|
| Part No. | mm | in | HS ³⁾ in | in | mm | mm | mm | mm | | | |
| H 2328 | 125 | 5 | — | 4 15/16 | 131 | 180 | 24 | — | AN 28 | AW 28 | 5.550 |
| H 2330 | 135 | 5 1/4 | — | 5 3/16 | 139 | 195 | 26 | — | AN 30 | AW 30 | 6.630 |
| H 2332 | 140 | 5 1/2 | — | 5 7/16 | 147 | 210 | 28 | — | AN 32 | AW 32 | 9.140 |
| H 2334 | 150 | 6 | — | 5 15/16 | 154 | 220 | 29 | — | AN 34 | AW 34 | 10.200 |
| H 2336 | 160 | 6 1/2 | — | 6 7/16 | 161 | 230 | 30 | — | AN 36 | AW 36 | 11.300 |
| H 2338 | 170 | 6 3/4 | — | 6 15/16 | 169 | 240 | 31 | — | AN 38 | AW 38 | 12.600 |
| H 2340 | 180 | 7 | — | 7 3/16 | 176 | 250 | 32 | — | AN 40 | AW 40 | 13.900 |
| H 2344 | 200 | 8 | — | — | 186 | 280 | 35 | — | HN 44 | AW 44 | 16.700 |
| H 2348 | 220 | — | — | — | 199 | 300 | 37 | — | HN 48 | AW 48 | 19.700 |
| H 2352 | 240 | — | — | — | 211 | 330 | 39 | — | HN 52 | AW 52 | 24.200 |
| H 2356 | 260 | — | — | — | 224 | 350 | 41 | — | HN 56 | AW 56 | 27.800 |

NOTE :

1) Adapter sleeves are supplied complete with lock nuts and lock washers or lock plates.

整組緊定套附螺母及華司或鎖定片。

2) Adapter sleeves for these bores are designated as HE, e.g. HE2305.

此欄套筒內徑規格為HE，例如HE2305。

3) Adapter sleeves for these bores are designated as HS, e.g. HS2308.

此欄套筒內徑規格為HS，例如HS2308。

4) Adapter sleeves for these bores are designated as HA, e.g. HA2306.

此欄套筒內徑規格為HA，例如HA2306。