



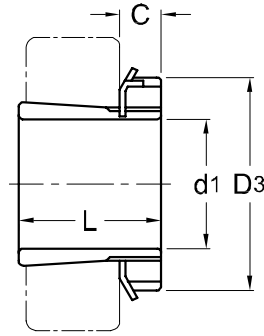
Adapter Sleeves

H 3

HE 3

HS 3

HA 3



TAPER 1 : 12

Adapter ¹⁾ Part No.	d ₁				L mm	D ₃ mm	C mm	Lock Nut	Lock Washer	Weight (kgs)
	H mm	HE ²⁾ in	HS ³⁾ in	HA ⁴⁾ in						
H 304	17	—	—	—	28	32	7	AN 04	AW 04	0.045
H 305	20	3/4	7/8	—	29	38	8	AN 05	AW 05	0.075
H 306	25	1	7/8	15/16	31	45	8	AN 06	AW 06	0.109
H 307	30	—	1 1/8	1 3/16	35	52	9	AN 07	AW 07	0.142
H 308	35	1 1/4	1 3/8	1 5/16	36	58	10	AN 08	AW 08	0.189
H 309	40	1 1/2	1 5/8	1 7/16	39	65	11	AN 09	AW 09	0.248
H 310	45	1 3/4	1 5/8	1 11/16	42	70	12	AN 10	AW 10	0.303
H 311	50	2	1 7/8	1 15/16	45	75	12	AN 11	AW 11	0.345
H 312	55	—	2 1/8	—	47	80	13	AN 12	AW 12	0.394
H 313	60	2 1/4	2 3/8	2 3/16	50	85	14	AN 13	AW 13	0.458
H 314	60	—	—	—	52	92	14	AN 14	AW 14	0.723
H 315	65	2 1/2	—	2 7/16	55	98	15	AN 15	AW 15	0.831
H 316	70	2 3/4	—	2 11/16	59	105	17	AN 16	AW 16	1.030
H 317	75	3	—	2 15/16	63	110	18	AN 17	AW 17	1.180
H 318	80	—	—	3 3/16	65	120	18	AN 18	AW 18	1.370
H 319	85	3 1/4	—	—	68	125	19	AN 19	AW 19	1.560
H 320	90	3 1/2	—	3 7/16	71	130	20	AN 20	AW 20	1.690
H 321	95	—	—	—	74	140	20	AN 21	AW 21	1.950
H 322	100	4	—	3 15/16	77	145	21	AN 22	AW 22	2.180

NOTE :

1) Adapter sleeves are supplied complete with lock nuts and lock washers or lock plates.

整組緊定套附螺母及華司或鎖定片。

2) Adapter sleeves for these bores are designated as HE, e.g. HE305.

此欄套筒內徑規格為HE，例如HE305。

3) Adapter sleeves for these bores are designated as HS, e.g. HS305.

此欄套筒內徑規格為HS，例如HS305。

4) Adapter sleeves for these bores are designated as HA, e.g. HA306.

此欄套筒內徑規格為HA，例如HA306。