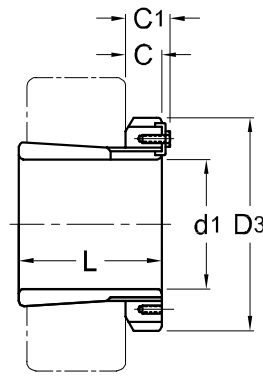




**Adapter Sleeves
H 32**



TAPER 1 : 12

Adapter ¹⁾ Part No.	d ₁ mm	L mm	D ₃ mm	C mm	C1 ²⁾ mm	Lock Nut	Lock Plate	Weight (kgs)
H 3260	280	240	380	40	53	AN 60	AL 60	34.100
H 3264	300	258	400	42	56	AN 64	AL 64	39.300
H 3268	320	288	440	55	72	AN 68	AL 68	54.600
H 3272	340	299	460	58	75	AN 72	AL 72	60.200
H 3276	360	310	490	60	77	AN 76	AL 76	69.600
H 3280	380	328	520	62	82	AN 80	AL 80	81.000
H 3284	400	352	540	70	90	AN 84	AL 84	94.000
H 3288	410	361	560	70	90	AN 88	AL 88	118.000
H 3292	430	382	580	75	95	AN 92	AL 92	132.000
H 3296	450	397	620	75	95	AN 96	AL 96	152.000
H 32/500	470	428	630	80	100	AN 100	AL 100	166.000

NOTE :

- 1) Adapter sleeves are supplied complete with lock nuts and lock washers or lock plates.
整組緊定套附螺母及華司或鎖定片。
- 2) Adapter with the dimension C1 have a locking device as shown in the right illustration.
標示出C1尺寸的套筒附鎖定裝置，如右圖所示。